

DONNEES TECHNIQUES



SKATE

DONNEES TECHNIQUES

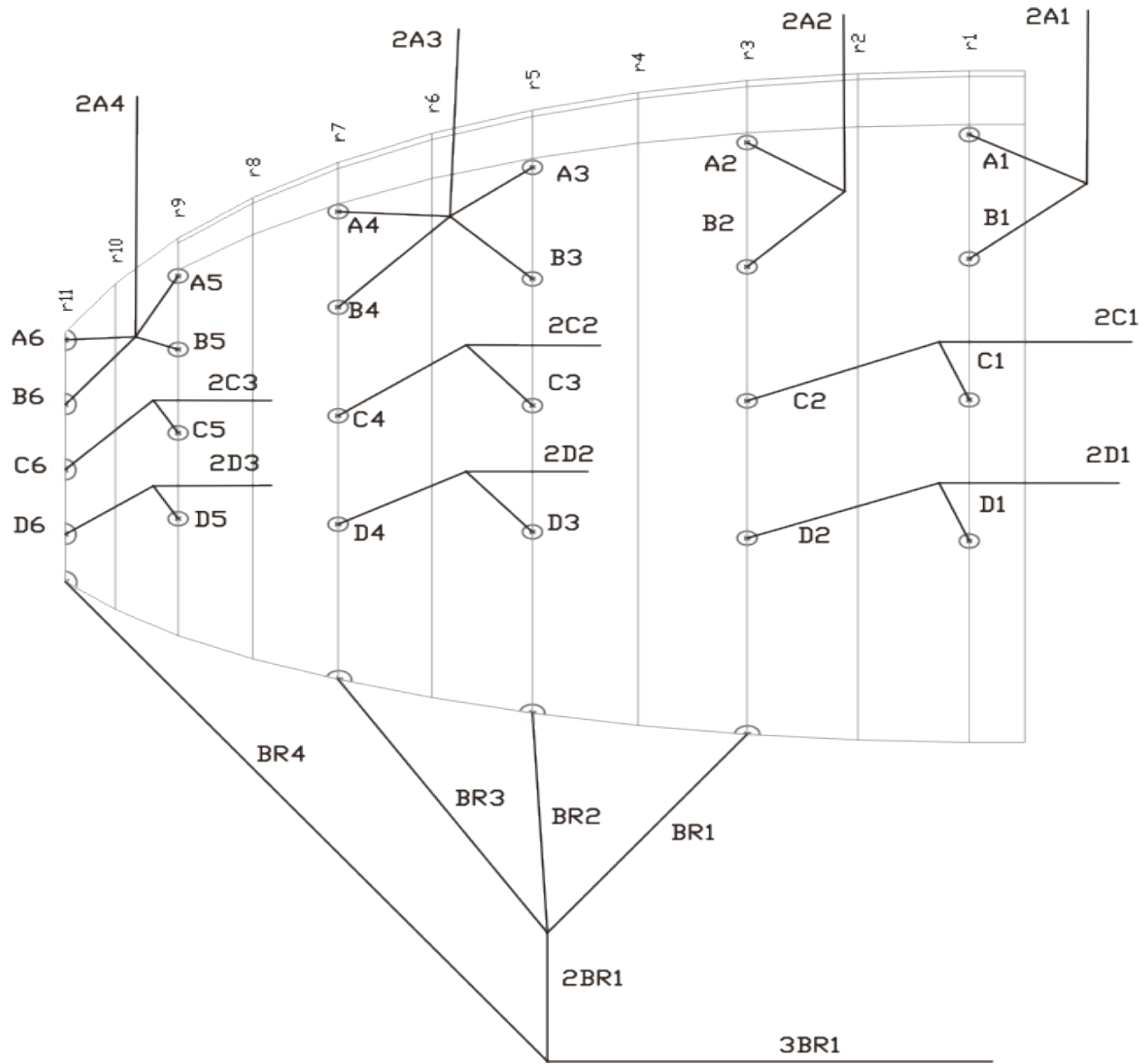
| SKATE | | | 8 | 10 | 12 | 14 |
|------------------|-------------|----|----------|----------|----------|----------|
| ALVEOLES | NOMBRE | | 21 | 21 | 21 | 21 |
| | FERMEES | | 4 | 4 | 4 | 4 |
| | CAISSONS | | 6 | 6 | 6 | 6 |
| A PLAT | SURFACE | M2 | 8 | 10 | 12 | 14 |
| | ENVERGURE | M | 4,88 | 5,29 | 5,8 | 6,26 |
| | ALLONGEMENT | | 2,8 | 2,8 | 2,8 | 2,8 |
| PROJETE | SURFACE | M2 | 7,36 | 9,2 | 11 | 12,81 |
| | ENVERGURE | M | 4,47 | 4,71 | 5,15 | 5,55 |
| | ALLONGEMENT | | 2,4 | 2,4 | 2,4 | 2,4 |
| APLATISSEMENT | | % | 8 | 8 | 8 | 8 |
| CORDE | MAXIMUM | M | 2,07 | 2,25 | 2,46 | 2,66 |
| | MINIMUM | M | 0,77 | 0,84 | 0,92 | 0,99 |
| | MOYENNE | | 1,6 | 1,8 | 2,06 | 2,2 |
| SUSPENTES | TOTALES | M | 100 | 109 | 119 | 129 |
| | HAUTEUR | M | 2,82 | 3,06 | 3,35 | 3,62 |
| | NOMBRE | | 80 | 80 | 80 | 80 |
| | REPARTITION | | 4+3+3 | 4+3+3 | 4+3+3 | 4+3+3 |
| ELEVATEURS | NOMBRE | 3 | A/B/C | A/B/C | A/B/C | A/B/C |
| | AFFICHEURS | | YES | YES | YES | YES |
| SUSPENTES ECOLE | PRINCIPALES | | - | 4+6 | 4+6 | 4+6 |
| ELEVATEURS ECOLE | NOMBRE | 2 | - | A/B | A/B | A/B |
| | AFFICHEURS | | - | NO | NO | NO |
| CHARGE ALAIRE | MAXIMUM | KG | 13,1 | 11 | 9,5 | 8,5 |
| | MINIMUM | KG | 6,25 | 5 | 4,1 | 3,5 |
| POIDS DE L'AILE | | KG | 2,5 | 2,7 | 3 | 3,3 |
| HOMOLOGATION | | | EN 926-1 | EN 926-1 | EN 926-1 | EN 926-1 |

MATERIAUX

| VOILERIE | MATERIAUX | FABRICANT |
|----------------------------|---------------------|--------------------------|
| EXTRADOS | 30D ME | DOMINICO |
| INTRADOS | 30D ME | DOMINICO |
| PROFIL | 30D FM | DOMINICO |
| DIAGONALES | 30D FM | DOMINICO |
| POINT D'ATTACHE | LKI - 13 / LKI - 10 | KOLON INDUSTRIAL (KOREA) |
| RENFORT DU POINT D'ATTACHE | W-420 | D-P (GERMANY) |
| RENFORT DU BORD DE FUITE | MYLAR 13 M/M | D-P (GERMANY) |
| RENFORT CLOISONS | W-420 | D-P (GERMANY) |
| FIL | SERAFIL 40 | AMAN (GERMANY) |

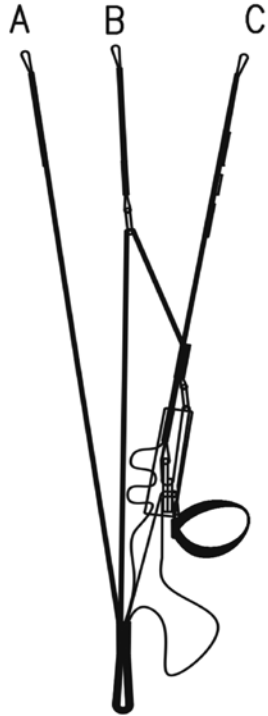
| SUSPENTAGE | MATERIAUX | FABRICANT |
|----------------------------|------------------------|--------------------------|
| CASCADES SUPERIEURES | DYNEEMA SK-65 | DSM (NETHERLAND) |
| CASCADES INTERMEDIARES | DYNEEMA SK-65 | DSM (NETHERLAND) |
| CASCADES PRINCIPALES | TOP LINE ULTIMATE12999 | COUSIN TRESTREC (FRANCE) |
| FREIN | DYNEEMA SK-65 | DSM (NETHERLAND) |
| CASCADES PRINCIPALES FREIN | TTNL 400 | TEIJIN LIMITED (JAPAN) |
| FIL | SERAFIL 60 | AMAN (GERMANY) |

| ELEVATEURS | MATERIAUX | FABRICANT |
|------------|-----------|--------------------------|
| SANGLES | RP - 20 | GUTH & WOLF (GERMANY) |
| FIL | N/F-66 | YOUNG CHANG T&C LTD |
| MAILLONS | MRI4 | ANSUNG PRECISION (KOREA) |





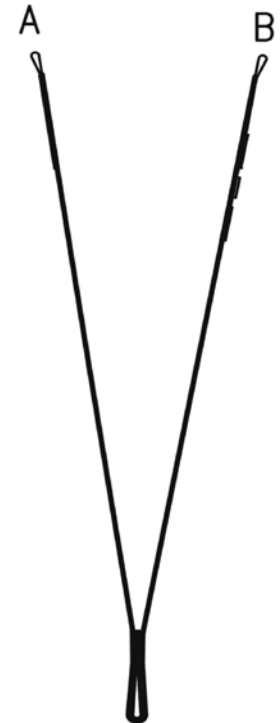
POSITION RALENTI:
. VITESSE MINI
. PERFORMANCES MAXIMUM



POSITION NEUTRE:
. POSITION IDEALE POUR LE DECOLLAGE



POSITION RAPIDE:
. VITESSE MAXIMUM



FONCTIONNEMENT DES TRIMS DE LA SKATE

ELEVATEURS ECOLES POUR LA SKATE SANS TRIMS

DONNEES TECHNIQUES DES COULEURS

| | | | | |
|----------|---|-----------|--------------------|----------|
| SKATE 14 | 1 | DEEP BLUE | COULEUR PRINCIPALE | REF: 354 |
| | 2 | DARK GREY | MOUSTACHE | REF: 921 |
| | 3 | WHITE | LISERET | REF: 001 |



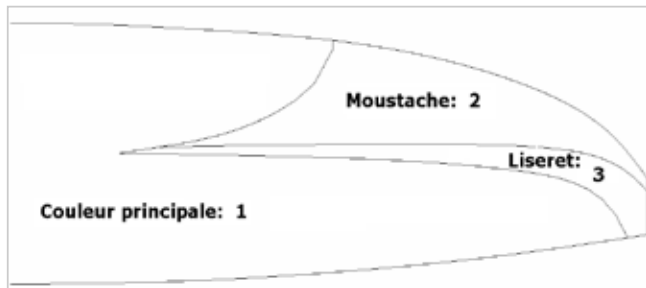
| | | | | |
|----------|---|------------|--------------------|----------|
| SKATE 12 | 1 | DARK GREY | COULEUR PRINCIPALE | REF: 121 |
| | 2 | DRAGON RED | MOUSTACHE | REF: 636 |
| | 3 | ORANGE | LISERET | REF: 744 |



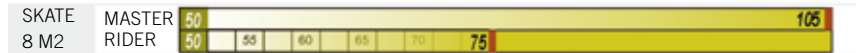
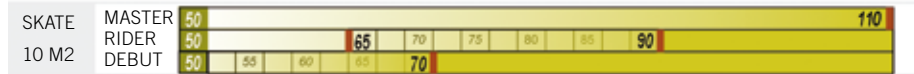
| | | | | |
|----------|---|------------|--------------------|----------|
| SKATE 10 | 1 | DRAGON RED | COULEUR PRINCIPALE | REF: 636 |
| | 2 | DARK GREY | MOUSTACHE | REF: 121 |
| | 3 | WHITE | LISERET | REF: 001 |



| | | | | |
|---------|---|------------|--------------------|----------|
| SKATE 8 | 1 | BLACK | COULEUR PRINCIPALE | REF: 102 |
| | 2 | SUNFLOWER | MOUSTACHE | REF: 921 |
| | 3 | DRAGON RED | LISERET | REF: 636 |



CHARGE ALAIRE



DONNEES SUSPENTES

SKATE 8

| REF. | CODE | CM. | REF. | CODE | CM. | REF. | CODE | CM. | REF. | CODE | CM. | REF. | CODE | |
|----------|-------------|-------|----------|-------------|------|----------|-------------|-------|----------|-------------|-------|--------------|-------------|-----------------|
| A | | | B | | | C | | | D | | | BRAKE | | |
| A1 | SK65-225-34 | 98 | B1 | SK65-225-34 | 102 | C1 | SK65-225-34 | 108 | D1 | SK65-225-34 | 109 | BR1 | SK65-225-35 | 156 |
| A2 | SK65-225-34 | 95 | B2 | SK65-225-34 | 99,5 | C2 | SK65-225-34 | 107 | D2 | SK65-225-34 | 107,5 | BR2 | SK65-225-35 | 145,5 |
| A3 | SK65-225-34 | 109 | B3 | SK65-225-34 | 112 | C3 | SK65-225-34 | 92 | D3 | SK65-225-34 | 93,5 | BR3 | SK65-225-35 | 146 |
| A4 | SK65-225-34 | 111 | B4 | SK65-225-34 | 117 | C4 | SK65-225-34 | 95 | D4 | SK65-225-34 | 95 | BR4 | SK65-225-35 | 190,5 |
| A5 | SK65-225-34 | 88,5 | B5 | SK65-225-34 | 93 | C5 | SK65-225-34 | 69 | D5 | SK65-225-34 | 67 | | | |
| A6 | SK65-225-34 | 89 | B6 | SK65-225-34 | 96 | C6 | SK65-225-34 | 69 | D6 | SK65-225-34 | 64 | | | |
| 2 A1 | TLU-500-12 | 174 | | | | 2 C1 | TLU-500-30 | 176,5 | 2 D1 | TLU-500-30 | 190,5 | 2 BR1 | SK65-225-35 | 60,5 |
| 2 A2 | TLU-500-12 | 175,5 | | | | 2 C2 | TLU-500-30 | 192 | 2 D2 | TLU-500-30 | 204 | | | |
| 2 A3 | TLU-500-12 | 164 | | | | 2 C3 | TLU-500-30 | 217 | 2 D3 | TLU-500-30 | 228 | | | |
| 2 A4 | TLU-500-12 | 187,5 | | | | | | | | | | | | |
| | | | | | | | | | | | | 3 BR1 | TNL-400-35 | 142,5 |
| | | | | | | | | | | | | | | POINT AT: 122,5 |

DONNEES SUSPENTES

SKATE 10

| REF. | CODE | CM. | REF. | CODE | CM. | REF. | CODE | CM. | REF. | CODE | CM. | REF. | CODE | |
|----------|-------------|-------|----------|-------------|-----|----------|-------------|-------|----------|-------------|-------|--------------|-------------|---------------|
| A | | | B | | | C | | | D | | | BRAKE | | |
| A1 | SK65-225-34 | 106 | B1 | SK65-225-34 | 111 | C1 | SK65-225-34 | 117,5 | D1 | SK65-225-34 | 118,5 | BR1 | SK65-225-35 | 169 |
| A2 | SK65-225-34 | 103 | B2 | SK65-225-34 | 108 | C2 | SK65-225-34 | 116 | D2 | SK65-225-34 | 116,5 | BR2 | SK65-225-35 | 158 |
| A3 | SK65-225-34 | 118 | B3 | SK65-225-34 | 122 | C3 | SK65-225-34 | 100 | D3 | SK65-225-34 | 102 | BR3 | SK65-225-35 | 158,5 |
| A4 | SK65-225-34 | 120,5 | B4 | SK65-225-34 | 127 | C4 | SK65-225-34 | 103 | D4 | SK65-225-34 | 103 | BR4 | SK65-225-35 | 207 |
| A5 | SK65-225-34 | 96,5 | B5 | SK65-225-34 | 101 | C5 | SK65-225-34 | 75 | D5 | SK65-225-34 | 72,5 | | | |
| A6 | SK65-225-34 | 96,5 | B6 | SK65-225-34 | 104 | C6 | SK65-225-34 | 75 | D6 | SK65-225-34 | 69,5 | | | |
| 2 A1 | TLU-500-12 | 188,5 | | | | 2 C1 | TLU-500-30 | 191 | 2 D1 | TLU-500-30 | 206 | 2 BR1 | SK65-225-35 | 65,5 |
| 2 A2 | TLU-500-12 | 190 | | | | 2 C2 | TLU-500-30 | 207,5 | 2 D2 | TLU-500-30 | 220 | | | |
| 2 A3 | TLU-500-12 | 177,5 | | | | 2 C3 | TLU-500-30 | 234,5 | 2 D3 | TLU-500-30 | 246,5 | | | |
| 2 A4 | TLU-500-12 | 203 | | | | | | | | | | | | |
| | | | | | | | | | | | | 3 BR1 | TNL-400-35 | 154 |
| | | | | | | | | | | | | | | POINT AT: 134 |

DONNEES SUSPENTES

| SKATE | | | 12 | | | | | | | | | | | |
|----------|-------------|-------|----------|-------------|-------|----------|-------------|-------|----------|-------------|-------|--------------|-------------|-------|
| REF. | CODE | CM. | REF. | CODE | CM. | REF. | CODE | CM. | REF. | CODE | CM. | REF. | CODE | CM. |
| A | | | B | | | C | | | D | | | BRAKE | | |
| A1 | SK65-225-34 | 116,5 | B1 | SK65-225-34 | 121,5 | C1 | SK65-225-34 | 128,5 | D1 | SK65-225-34 | 129,5 | BR1 | SK65-225-35 | 185 |
| A2 | SK65-225-34 | 113 | B2 | SK65-225-34 | 118 | C2 | SK65-225-34 | 127 | D2 | SK65-225-34 | 127,5 | BR2 | SK65-225-35 | 172 |
| A3 | SK65-225-34 | 129,5 | B3 | SK65-225-34 | 133,5 | C3 | SK65-225-34 | 109,5 | D3 | SK65-225-34 | 111,5 | BR3 | SK65-225-35 | 173,5 |
| A4 | SK65-225-34 | 132 | B4 | SK65-225-34 | 139 | C4 | SK65-225-34 | 113 | D4 | SK65-225-34 | 113 | BR4 | SK65-225-35 | 226 |
| A5 | SK65-225-34 | 105,5 | B5 | SK65-225-34 | 110,5 | C5 | SK65-225-34 | 82,5 | D5 | SK65-225-34 | 79,5 | | | |
| A6 | SK65-225-34 | 106 | B6 | SK65-225-34 | 114 | C6 | SK65-225-34 | 82 | D6 | SK65-225-34 | 76 | | | |
| | | | | | | | | | | | | | | |
| 2 A1 | TLU-500-12 | 207 | | | | 2 C1 | TLU-500-30 | 209,5 | 2 D1 | TLU-500-30 | 226 | 2 BR1 | SK65-225-35 | 72,5 |
| 2 A2 | TLU-500-12 | 208,5 | | | | 2 C2 | TLU-500-30 | 228 | 2 D2 | TLU-500-30 | 241,5 | | | |
| 2 A3 | TLU-500-12 | 195 | | | | 2 C3 | TLU-500-30 | 257,5 | 2 D3 | TLU-500-30 | 270,5 | | | |
| 2 A4 | TLU-500-12 | 222,5 | | | | | | | | | | | | |
| | | | | | | | | | | | | 3 BR1 | TNL-400-35 | 166,5 |
| | | | | | | | | | | | | | | |
| | | | | | | | | | | | | | POINT AT: | 146,5 |

DONNEES SUSPENTES

SKATE 14

| REF. | CODE | CM. | REF. | CODE | CM. | REF. | CODE | CM. | REF. | CODE | CM. | REF. | CODE | |
|----------|-------------|-------|----------|-------------|-------|----------|-------------|-------|----------|-------------|-------|--------------|-------------|---------------|
| A | | | B | | | C | | | D | | | BRAKE | | |
| A1 | SK65-225-34 | 125,5 | B1 | SK65-225-34 | 131 | C1 | SK65-225-34 | 139 | D1 | SK65-225-34 | 140 | BR1 | SK65-225-35 | 200 |
| A2 | SK65-225-34 | 122 | B2 | SK65-225-34 | 127,5 | C2 | SK65-225-34 | 137,5 | D2 | SK65-225-34 | 138 | BR2 | SK65-225-35 | 187 |
| A3 | SK65-225-34 | 140 | B3 | SK65-225-34 | 144 | C3 | SK65-225-34 | 118 | D3 | SK65-225-34 | 120,5 | BR3 | SK65-225-35 | 187,5 |
| A4 | SK65-225-34 | 143 | B4 | SK65-225-34 | 150 | C4 | SK65-225-34 | 122 | D4 | SK65-225-34 | 122 | BR4 | SK65-225-35 | 245 |
| A5 | SK65-225-34 | 114 | B5 | SK65-225-34 | 119,5 | C5 | SK65-225-34 | 89 | D5 | SK65-225-34 | 86 | | | |
| A6 | SK65-225-34 | 114,5 | B6 | SK65-225-34 | 123,5 | C6 | SK65-225-34 | 88,5 | D6 | SK65-225-34 | 82,5 | | | |
| 2 A1 | TLU-500-12 | 223,5 | | | | 2 C1 | TLU-500-30 | 226,5 | 2 D1 | TLU-500-30 | 244,5 | 2 BR1 | SK65-225-35 | 77,5 |
| 2 A2 | TLU-500-12 | 225 | | | | 2 C2 | TLU-500-30 | 246,5 | 2 D2 | TLU-500-30 | 261,5 | | | |
| 2 A3 | TLU-500-12 | 210,5 | | | | 2 C3 | TLU-500-30 | 278,5 | 2 D3 | TLU-500-30 | 292,5 | | | |
| 2 A4 | TLU-500-12 | 240,5 | | | | | | | | | | | | |
| | | | | | | | | | | | | 3 BR1 | TNL-400-35 | 178 |
| | | | | | | | | | | | | | | POINT AT: 158 |

NIVIUK SKATE 8

| LONGUEURS TOTALES CM. | | | | | |
|-----------------------|----------|----------|----------|----------|-----------|
| | A | B | C | D | BR |
| 1 | 272 | 276 | 284,5 | 299,5 | 339 |
| 2 | 270,5 | 275 | 283,5 | 298 | 328,5 |
| 3 | 273 | 276 | 284 | 297,5 | 329 |
| 4 | 275 | 281 | 287 | 299 | 313 |
| 5 | 276 | 280,5 | 286 | 295 | |
| 6 | 276,5 | 283,5 | 286 | 292 | |

| LONGUEURS DES ELEVATEURS CM. | | | | |
|------------------------------|----------|----------|----------|-----------|
| | A | C | D | |
| | 50 | 45 | 40 | LENTE |
| | 50 | 50 | 50 | NEUTRE |
| | 50 | 55 | 60 | ACCELEREE |

NIVIUK SKATE 10

| LONGUEURS TOTALES CM. | | | | | |
|-----------------------|----------|----------|----------|----------|-----------|
| | A | B | C | D | BR |
| 1 | 294,5 | 299,5 | 308,5 | 324,5 | 368,5 |
| 2 | 293 | 298 | 307 | 322,5 | 357,5 |
| 3 | 295,5 | 299,5 | 307,5 | 322 | 358 |
| 4 | 298 | 304,5 | 310,5 | 323 | 341 |
| 5 | 299,5 | 304 | 309,5 | 319 | |
| 6 | 299,5 | 307 | 309,5 | 316 | |

| LONGUEURS DES ELEVATEURS CM. | | | | |
|------------------------------|----------|----------|----------|-----------|
| | A | C | D | |
| | 50 | 45 | 40 | LENTE |
| | 50 | 50 | 50 | NEUTRE |
| | 50 | 55 | 60 | ACCELEREE |

| ECOLE | |
|-------|----|
| 50 | 50 |

NIVIUK SKATE 12

LONGUEURS TOTALES CM.

| | A | B | C | D | BR |
|---|----------|----------|----------|----------|-----------|
| 1 | 323,5 | 328,5 | 338 | 355,5 | 404 |
| 2 | 321,5 | 326,5 | 336,5 | 353,5 | 391 |
| 3 | 324,5 | 328,5 | 337,5 | 353 | 392,5 |
| 4 | 327 | 334,5 | 341 | 354,5 | 372,5 |
| 5 | 328 | 333 | 340 | 350 | |
| 6 | 328,5 | 336,5 | 339,5 | 346,5 | |

LONGUEURS DES ELEVATEURS CM.

| | A | C | D | |
|--|----------|----------|----------|-----------|
| | 50 | 45 | 40 | LENTE |
| | 50 | 50 | 50 | NEUTRE |
| | 50 | 55 | 60 | ACCELEREE |

ECOLE

| | |
|----|----|
| 50 | 50 |
|----|----|

NIVIUK SKATE 14

LONGUEURS TOTALES CM.

| | A | B | C | D | BR |
|---|----------|----------|----------|----------|-----------|
| 1 | 349 | 354,5 | 365,5 | 384,5 | 435,5 |
| 2 | 347 | 352,5 | 364 | 382,5 | 422,5 |
| 3 | 350,5 | 354,5 | 364,5 | 382 | 423 |
| 4 | 353,5 | 360,5 | 368,5 | 353,5 | 403 |
| 5 | 354,5 | 360 | 367,5 | 378,5 | |
| 6 | 355 | 364 | 367 | 375 | |

LONGUEURS DES ELEVATEURS CM.

| | A | C | D | |
|--|----------|----------|----------|-----------|
| | 50 | 45 | 40 | LENTE |
| | 50 | 50 | 50 | NEUTRE |
| | 50 | 55 | 60 | ACCELEREE |

ECOLE

| | |
|----|----|
| 50 | 50 |
|----|----|

DONNEES TECHNIQUES TISSU**DESCRIPTION**

| | |
|------------------|--|
| DOMINICO | 30D ME |
| TISSU | ME |
| TYPE DE FINITION | PU COATED AND WATER REPELLENT FINISHED |
| TYPE DE FIL | NYLON 30D - 66 |
| LARGEUR | 60" |
| CHABLON | RIP STOP |

SPECIFICATIONS TECHNIQUES

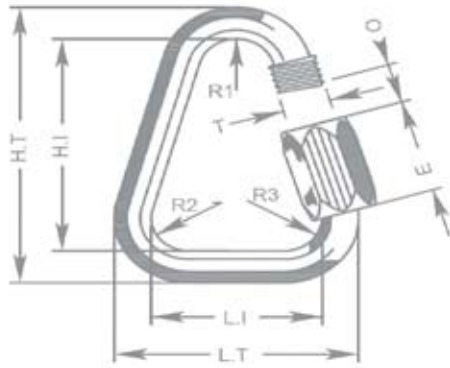
| | | |
|---|-------------|---------|
| POIDS DU TISSU ENDUIT | G/M2 | 44 |
| RESISTANCE A LA DECHIRURE - SENS CHAINE | KG | 3 |
| RESISTANCE A LA DECHIRURE - SENS TRAME | KG | 3 |
| ALLONGEMENT DANS LE BIAIS A 5 LBS | % | 17 |
| ALLONGEMENT DANS LE BIAIS A 10 LBS | % | 25 |
| RESISTANCE A LA RUPTURE | KG | 40 MINI |
| SENS CHAINE | | |
| RESISTANCE A LA RUPTURE SENS TRAME | KG | 40 MINI |
| | | |
| PERMEABILITE A L'AIR | L / M2 / MN | 40 MAX |

DONNEES TECHNIQUES MAILLON

DESCRIPTION

| | |
|----------|-----------------|
| MAILLON | DELTA |
| REF. | MR14 |
| MATERIEL | STAINLESS STEEL |
| DIAMETRE | 4,3 M/M |
| POIDS | 12 G/PC |

SPECIFICATIONS TECHNIQUES



| DIMENSIONES | M/M |
|-------------|-----|
| L.T. | 28 |
| L.I. | 20 |
| H.T. | 38 |
| H.I. | 30 |
| O | 4 |
| E | 11 |
| R1 | -- |
| R2 | -- |
| R3 | -- |
| T | 4 |
| CHARGE | KG |
| UTILE | 150 |
| RUPTURE | 750 |

MATERIEL

AISI 304 ACIER INOXYDABLE STANDARD

FERMETURE PAR VISSAGE MANUEL ET COMPLET DE L'ECROU POUR GARANTIR UNE SECURITE OPTIMALE (AUCUN FILET NE DOIT ETRE APPARENT).

CONTROLE SYSTEMATIQUE DES MAILLONS RAPIDES AVANT CHAQUE VOL.

DONNEES TECHNIQUES FIL

| | |
|-------------------|--------------------------|
| NOM | SERAFIL |
| N° DE REFERENCE | 40 |
| MATERIEL | POLYESTER |
| FINITION | SILK |
| DENSITE LINEAIRE | NM 41 / 3 (DTEX 244 * 3) |
| CHARGE DE RUPTURE | 4.500 CN |
| ALLONGEMENT | 17,00% |

| | |
|-------------------|--------------------------|
| NOM | SERAFIL |
| N° DE REFERENCE | 60 |
| MATERIEL | POLYESTER |
| FINITION | SILK |
| DENSITE LINEAIRE | NM 61 / 3 (DTEX 163 * 3) |
| CHARGE DE RUPTURE | 3.000 CN |
| ALLONGEMENT | 17,00% |

PROPRIETE SERAFIL

| | | |
|------------------------------------|-------------|---------|
| SOLIDITE A LA LUMIERE ARTIFICIELLE | ISO 105 B02 | > 5 - 6 |
| SOLIDITE A LA SUEUR | ISO 105 E04 | > 4 |
| SOLIDITE AU LAVAGE | ISO 105 C04 | > 3 |
| SOLIDITE AU FROTTEMENT A SEC | ISO 105 X12 | > 4 |
| SOLIDITE AU LAVAGE EN SECHERESSE | ISO 105 D01 | > 3 - 4 |
| DEPERLANT | WR | |

| | |
|-------------------|--------------|
| NOM | BONDED NYLON |
| N° DE REFERENCE | N/F-66 |
| MATERIEL | NYLON |
| FINITION | SILK |
| DENSITE LINEAIRE | 210D / 6 |
| CHARGE DE RUPTURE | 9,7 KG |
| ALLONGEMENT | 25/30% |

DONNEES TECHNIQUES SANGLES**ELEVATEURS**

| | |
|-------------------|-----------|
| REFERENCE | G-R 22 |
| MATERIEL | POLYESTER |
| LARGEUR | 22 M/M |
| EPAISSEUR | 1,52 M/M |
| CHARGE DE RUPTURE | 1.100 DAN |
| ALLONGEMENT | MAX 15% |
| POIDS | 25 G/M |
| COULEUR | BLACK |

INDICATEUR COULEUR

| | |
|-------------------|-----------|
| REFERENCE | IC-G 1-2 |
| MATERIEL | POLYESTER |
| LARGEUR | 70 M/M |
| EPAISSEUR | 0,80 M/M |
| CHARGE DE RUPTURE | 130 DN |
| ALLONGEMENT | 35% |
| POIDS | 32 G/M |

POINT D'ATTACHE

| | |
|-------------------|----------|
| REFERENCE | LKI - 13 |
| MATERIEL | NYLON |
| EPAISSEUR | 13 M/M |
| CHARGE DE RUPTURE | 110 KG |
| ALLONGEMENT | 25/35% |
| POIDS | 7,2 G/M |
| COULEUR | WHITE |

| | |
|-------------------|----------|
| REFERENCE | LKI - 10 |
| MATERIEL | NYLON |
| EPAISSEUR | 10 M/M |
| CHARGE DE RUPTURE | 84 KG |
| ALLONGEMENT | 25/35% |
| POIDS | 3 G/M |
| COULEUR | WHITE |

nIVIUK

niviuk.com

The importance of small details